

## MOTOR APG MONOFASICO

USO GENERAL, ABIERTO

### CARACTERÍSTICAS:

- Diseño de alta eficiencia Capacitor de arranque / Capacitor de trabajo
- Aislamiento Clase F
- Uso continuo
- Rango de voltaje extendidos 110-127/220-254 Volts
- Rotación reversible (CW/CCW)
- Temperatura Ambiente 40° C
- Armazón 48Y con flecha 5/8" Diam. X 1.88" largo, 3 1/2" altura de flecha y base de montaje armazón 56



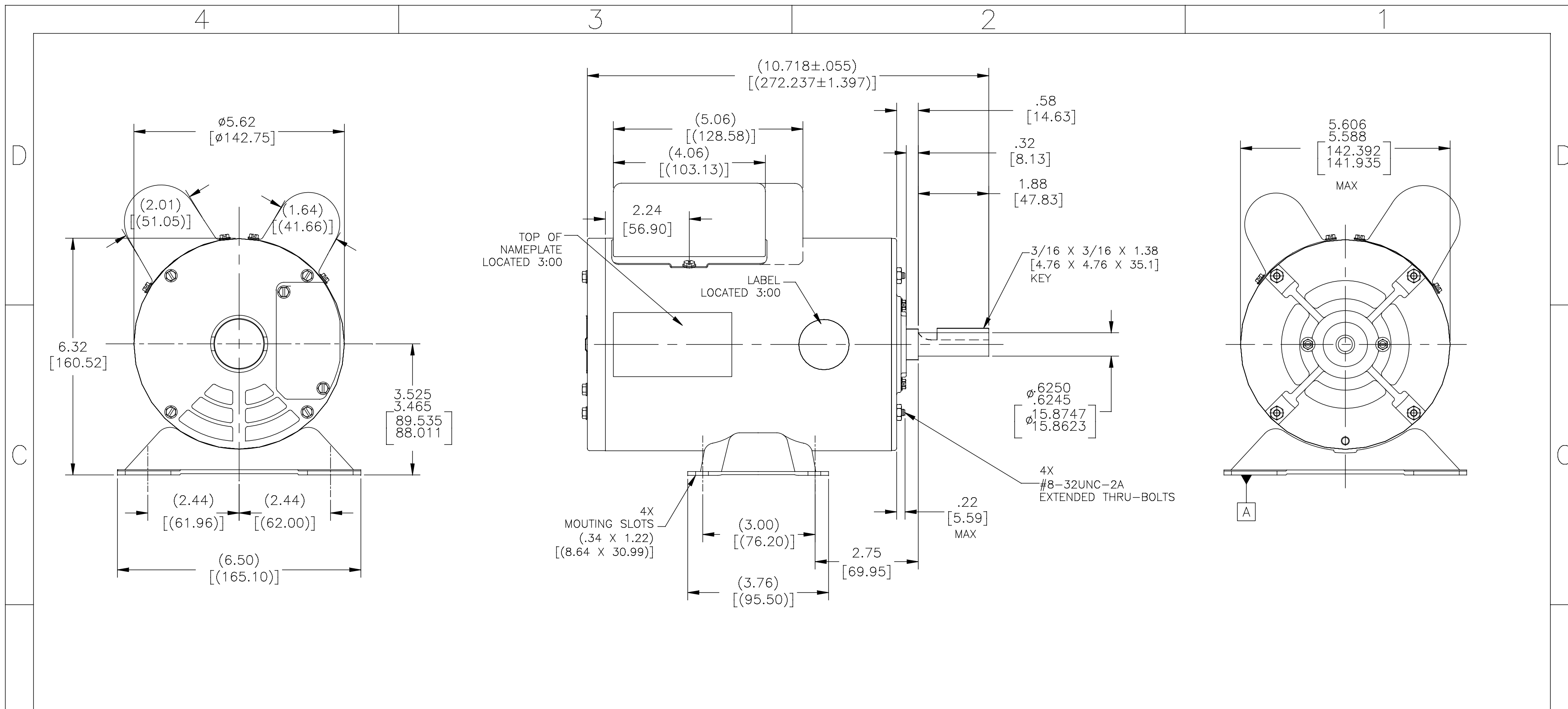
Cumple o excede niveles de eficiencia NOM-014



### BASE RÍGIDA

HP	RPM	Voltaje	Armazón	Número de Catalogo	Modelo	F.L. Amps	Peso (Kg)	DIM "C"	Factor Servicio
1/4	3600	110-115/208-230	48Y	JR001	K48AA81F07	3.82/1.91	7.26	9.620	1.35
1/4	1800	110-115/208-230	48Y	JR002	K48AA85F07	4.82/2.41	7.71	9.850	1.35
1/3	3600	110-115/208-230	48Y	JR003	K48AA82F07	7.2/3.6	8.16	9.750	1.35
1/3	1800	110-115/208-230	48Y	JR004	K48AA86F07	5.86/2.93	9.07	10.100	1.35
1/2	3600	110-115/208-230	48Y	JR005	K48AA83F07	7.8/3.9	10.43	9.970	1.25
1/2	1800	110-115/208-230	48Y	JR006	K48AA87F07	7.90/3.95	11.34	10.730	1.25
3/4	3600	110-115/208-230	56	JR007	K48AA84F07	11.0/5.5	11.79	10.250	1.25
3/4	1800	110-115/208-230	56	JR008	K56AC52F07	10.80/5.40	13.15	11.983	1.25
1	3600	110-115/208-230	56	JR009	K56AC48F07	13.4/6.7	13.61	10.840	1.25
1	1800	110-115/208-230	56	JR010	K56AC53F07	11.90/5.95	16.33	12.353	1.25
1 1/2	3600	110-115/208-230	56	JR011	K56AC49F07	18.0/9.0	18.14	11.720	1.15
1 1/2	1800	110-115/208-230	56	JR012	K56AC54F07	18.08/9.04	19.96	13.353	1.15
2	3600	110-115/208-230	56	JR013	K56AC50F07	26.4/13.2	17.24	12.220	1.15
2	1800	110-115/208-230	56	JR014	K56AC55F07	26.8/13.5	22.68	14.353	1.15
3	3600	110-115/208-230	56	JR015	K56AC51F07	32.5/16.25	22.68	13.170	1.15

✓ Normalmente en stock de México. Consulte disponibilidad con su asesor de ventas o servicio al cliente, o en la página de comercio electrónico de Regal<sup>®</sup> [latam.regalbeloit.com](http://latam.regalbeloit.com)



NAMEPLATE DATA	EXTERNAL CONNECTION DIAGRAM	NOTES												
MODEL: K48AA87F07 CUST PN: --- HP: 1/2HP SF: 1.25 ROT: REV RPM: 1725 TYPE: CP CODE: - FRAME: K48 VOLTS: 110-127/208-230 AMPS: 7.04-7.25/3.14-3.66 MAX AMPS: --- PH: 1 HZ: 60 INS: F AMB: 40 DUTY: CONT	<table border="1"> <tr> <td>                             YEL W/BLK                              PURPLE                              BLACK                              RED                              BROWN                              PURPLE                              WHITE                              BLACK                              ORANGE                              YELLOW                              RED/BLK                         </td> <td> </td> <td>                             YEL W/BLK                              PURPLE                              BLACK                              RED                              PURPLE                              BLACK                              BROWN                              ORANGE                              WHITE                              YELLOW                              RED/BLK                         </td> <td> </td> </tr> <tr> <td colspan="2">HIGE VOLTAGE</td> <td colspan="2">LOW VOLTAGE</td> </tr> <tr> <td colspan="4">CONNECTION SHOWS ARE FOR C.W. FROM LEAD END. FOR CCWLE ROTATION, INTERCHANGE YELLOW AND RED LEADS.</td> </tr> </table>	YEL W/BLK PURPLE BLACK RED BROWN PURPLE WHITE BLACK ORANGE YELLOW RED/BLK		YEL W/BLK PURPLE BLACK RED PURPLE BLACK BROWN ORANGE WHITE YELLOW RED/BLK		HIGE VOLTAGE		LOW VOLTAGE		CONNECTION SHOWS ARE FOR C.W. FROM LEAD END. FOR CCWLE ROTATION, INTERCHANGE YELLOW AND RED LEADS.				1. SHAFT RUNOUT NOT TO EXCEED .002[.05] T.I.R  2. THE LEAD ASSY SHOULD TO COME CONNECTED AT 110V. IF THE CUSTOMER NEEDS TO SWITCH TO 220V,HE/SHE WILL OPEN THE COVER AND SWITCH IT MANUALLY, FOLLOWING THE ELECTRICAL DIAGRAM.
YEL W/BLK PURPLE BLACK RED BROWN PURPLE WHITE BLACK ORANGE YELLOW RED/BLK		YEL W/BLK PURPLE BLACK RED PURPLE BLACK BROWN ORANGE WHITE YELLOW RED/BLK												
HIGE VOLTAGE		LOW VOLTAGE												
CONNECTION SHOWS ARE FOR C.W. FROM LEAD END. FOR CCWLE ROTATION, INTERCHANGE YELLOW AND RED LEADS.														

PERFORMANCE CURVE	APPROVED SAMPLE		
---	OER-8036		
UL COMPONENT	CSA		
FILE#	CCN#	FILE#	GUIDE#
---	---	---	---
CUSTOMER	RBM		

DRAWING REVISION C	REVISION BY X.AN	DATE 01-12-2016	TOLERANCES UNLESS OTHERWISE SPECIFIED DEC. INCH mm ANGLE .XX ±0.1 [±2.5] ±0.5° .XX ±0.02 [±0.51] .XXX ±0.005 [±0.127] .XXXX ±0.0005 [±0.0127]	DRAWN BY: X.AN	<b>Regal Beloit America, Inc.</b> DESCRIPTION MODEL-PFHP-48FR OUTLINE MATERIAL PROCESS/FINISH THIRD ANGLE PROJECTION
ECO ECO-0091451	APPROVED BY H.ZHANG	DATE 01-12-2016	REMOVE BURRS & BREAK SHARP EDGES .003/.015 [0.076/.381] CORNER FILLETS .02 [51] MACHINED SURFACES 125/INCH 3.2/mm SHOWN IN [BRACKETS]	DATE: 09-24-2015	
ECO DESCRIPTION SEE ECO				APPROVED BY: T.ZHAO	
COPYRIGHT REGAL BELOIT AMERICA, INC. ALL RIGHTS RESERVED. PROPRIETARY AND CONFIDENTIAL INFORMATION - THIS DOCUMENT IS THE PROPERTY OF REGAL BELOIT AMERICA, INC. (OWNER) AND CONTAINS OWNER'S PROPRIETARY INFORMATION. ANY PERSON, CORPORATION OR OTHER FIRM RECEIVING IT IS DEEMED, BY RECEIVING IT, TO AGREE THAT IT, AND/OR ANY PART OF IT, SHALL NOT BE DISCLOSED TO ANY PERSON, CORPORATION OR OTHER ENTITY, DUPLICATED, AND/OR USED, EXCEPT AS EXPRESSLY APPROVED IN WRITING IN ADVANCE BY OWNER. THIS DOCUMENT SHALL BE RETURNED TO OWNER UPON REQUEST. IT MAY BE SUBJECT TO CERTAIN RESTRICTIONS UNDER APPLICABLE EXPORT CONTROL LAWS AND REGULATIONS.			DATE: 09-24-2015		
				REFERENCE	SIZE DWG NO C K48AA87F07CX
				SHEET	1