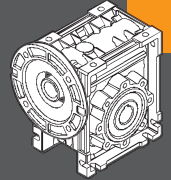


TRANSTECNOTM
THE MODULAR GEARMOTOR

CM

CM



RIGHT ANGLE WORMGEARBOXES
REDUCTORES SINFIN CORONA

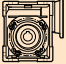
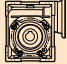
NEMA dimensions





Technical data

Datos técnicos

P ₁ [HP]	n ₂ [rpm]	M ₂ [lb.in]	sf	i		NEMA	P ₁ [HP]	n ₂ [rpm]	M ₂ [lb.in]	sf	i		NEMA
0.75							1.5						
(1750 rpm)	88	438	2.5	20	CM063	56C	(1750 rpm)	233	357	3.2	7.5	CM063	56C-140TC
	70	527	2.0	25	CM063	56C		175	465	2.5	10	CM063	56C-140TC
	58	608	2.2	30	CM063	56C		117	681	1.8	15	CM063	56C-140TC
	44	757	1.5	40	CM063	56C		88	876	1.2	20	CM063	56C-140TC
	35	892	1.2	50	CM063	56C		70	1054	1.0	25	CM063	56C-140TC
	29	1022	1.0	60	CM063	56C		58	1217	1.1	30	CM063	56C-140TC
	22	1233	0.8	80	CM063	56C							
	44	789	2.4	40	CM075	56C		117	681	2.9	15	CM075	56C-140TC
	35	933	1.8	50	CM075	56C		88	898	2.0	20	CM075	56C-140TC
	29	1071	1.6	60	CM075	56C		70	1081	1.5	25	CM075	56C-140TC
	22	1298	1.2	80	CM075	56C		58	1249	1.7	30	CM075	56C-140TC
	18	1514	0.9	100	CM075	56C		44	1579	1.2	40	CM075	56C-140TC
	35	973	2.9	50	CM090	56C		35	1865	0.9	50	CM075	56C-140TC
	29	1119	2.3	60	CM090	56C		29	2141	0.8	60	CM075	56C
	22	1384	1.7	80	CM090	56C		70	1122	2.4	25	CM090	56C-140TC
	18	1622	1.4	100	CM090	56C		58	1281	2.8	30	CM090	56C-140TC
								44	1644	2.0	40	CM090	56C-140TC
								35	1946	1.5	50	CM090	56C-140TC
								29	2238	1.2	60	CM090	56C-140TC
								22	2768	0.9	80	CM090	56C
								35	2055	2.5	50	CM110	140TC
								29	2368	1.9	60	CM110	140TC
								22	2941	1.4	80	CM110	140TC
								18	3460	1.1	100	CM110	140TC
1							2						
(1750 rpm)	233	235	2.7	7.5	CM050	56C	(1750 rpm)	233	476	2.4	7.5	CM063	140TC
	175	306	2.1	10	CM050	56C		175	620	1.9	10	CM063	140TC
	117	443	1.5	15	CM050	56C		117	908	1.4	15	CM063	140TC
	88	570	1.0	20	CM050	56C		88	1168	0.9	20	CM063	140TC
	70	685	0.8	25	CM050	56C		70	1406	0.8	25	CM063	140TC
	58	779	0.9	30	CM050	56C		58	1622	0.8	30	CM063	140TC
	117	454	2.7	15	CM063	56C-140TC							
	88	584	1.9	20	CM063	56C-140TC		117	908	2.2	15	CM075	140TC
	70	703	1.5	25	CM063	56C-140TC		88	1197	1.5	20	CM075	140TC
	58	811	1.6	30	CM063	56C-140TC		70	1442	1.1	25	CM075	140TC
	44	1009	1.1	40	CM063	56C		58	1665	1.3	30	CM075	140TC
	35	1189	0.9	50	CM063	56C		44	2105	0.9	40	CM075	140TC
	70	721	2.2	25	CM075	56C-140TC							
	58	833	2.6	30	CM075	56C-140TC		117	908	2.2	15	CM075	140TC
	44	1053	1.8	40	CM075	56C-140TC		88	1197	1.5	20	CM075	140TC
	35	1244	1.4	50	CM075	56C-140TC		70	1442	1.1	25	CM075	140TC
	29	1427	1.2	60	CM075	56C		58	1665	1.3	30	CM075	140TC
	22	1730	0.9	80	CM075	56C		44	2105	0.9	40	CM075	140TC
	44	1096	2.9	40	CM090	56C-140TC		88	1211	2.5	20	CM090	140TC
	35	1298	2.2	50	CM090	56C-140TC		70	1496	1.8	25	CM090	140TC
	29	1492	1.8	60	CM090	56C-140TC		58	1709	2.1	30	CM090	140TC
	22	1845	1.3	80	CM090	56C		44	2192	1.5	40	CM090	140TC
	18	2163	1.0	100	CM090	56C		35	2595	1.1	50	CM090	140TC
	29	1579	2.9	60	CM110	140TC		29	2984	0.9	60	CM090	140TC
	22	1961	2.1	80	CM110	140TC							
	18	2307	1.7	100	CM110	140TC							

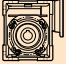



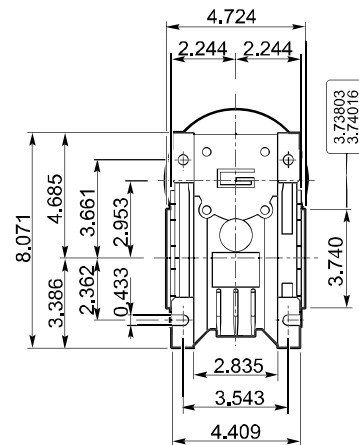
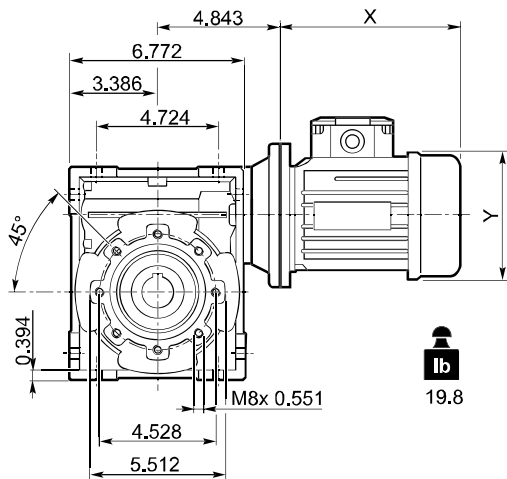
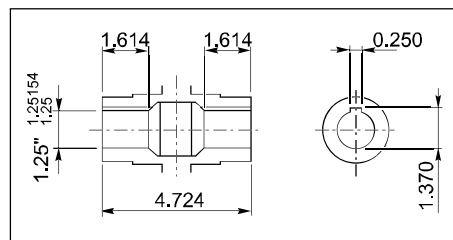
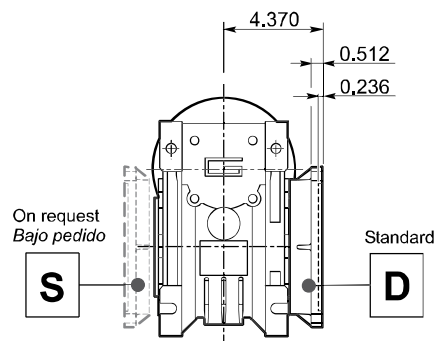
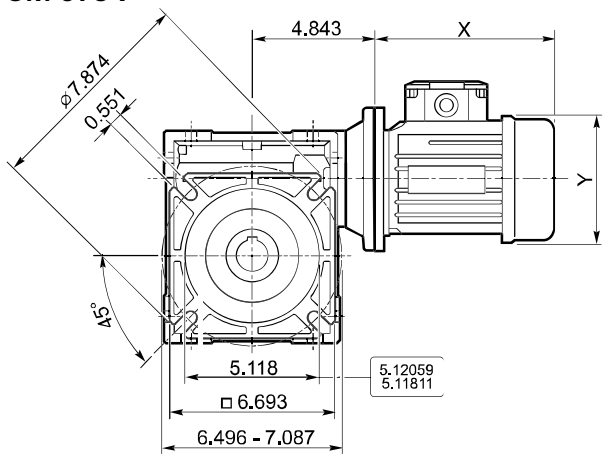
RIGHT ANGLE WORMGEARBOXES

REDUCTORES SINFIN CORONA

Technical data

Datos técnicos

P ₁ [HP]	n ₂ [rpm]	M ₂ [lb.in]	sf	i		NEMA	P ₁ [HP]	n ₂ [rpm]	M ₂ [lb.in]	sf	i		NEMA
2							5						
(1750 rpm)	58	1730	3.5	30	CM110	140TC	(1750 rpm)	233	1203	1.5	7.5	CM075	180TC
	44	2278	2.5	40	CM110	140TC		175	1568	1.2	10	CM075	180TC
	35	2739	1.9	50	CM110	140TC		117	2271	0.9	15	CM075	180TC
	29	3158	1.5	60	CM110	140TC		233	1217	2.1	7.5	CM090	180TC
	22	3922	1.1	80	CM110	140TC		175	1586	1.8	10	CM090	180TC
	18	4614	0.8	100	CM110	140TC		117	2325	1.4	15	CM090	180TC
3							7.5						
(1750 rpm)	233	722	2.4	7.5	CM075	180TC	(1750 rpm)	233	1804	2.5	7.5	CM110	210TC
	175	941	2.0	10	CM075	180TC		175	2379	2.1	10	CM110	210TC
	117	1362	1.5	15	CM075	180TC		117	3487	1.5	15	CM110	210TC
	117	1395	2.3	15	CM090	180TC		88	4596	1.1	20	CM110	210TC
	88	1817	1.7	20	CM090	180TC		233	2406	1.9	7.5	CM110	210TC
	70	2244	1.2	25	CM090	180TC		175	3172	1.5	10	CM110	210TC
	58	2563	1.4	30	CM090	180TC		117	4650	1.2	15	CM110	210TC
	88	1838	2.9	20	CM110	180TC		88	6128	0.9	20	CM110	210TC
	70	2271	2.2	25	CM110	180TC							
	58	2595	2.3	30	CM110	180TC							
	44	3417	1.7	40	CM110	180TC							
	35	4109	1.3	50	CM110	180TC							
	29	4736	1.0	60	CM110	180TC							

**CM****RIGHT ANGLE WORMGEARBOXES
REDUCTORES SINFIN CORONA****Dimensions****Dimensiones****CM 075 U****CM 075 F**

Hollow output shaft / Eje hueco de salida

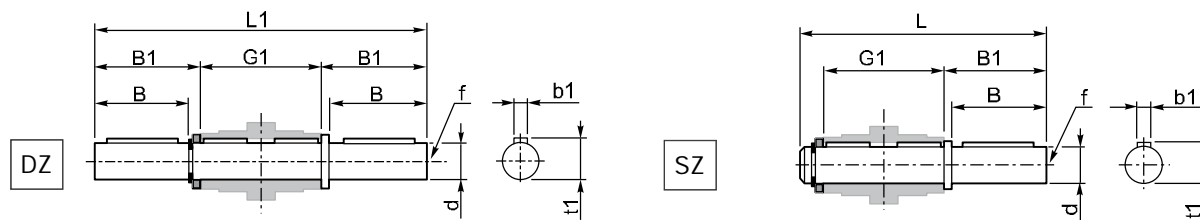


Accessories

Accesorios

Single and double output shaft

Eje de salida simple y doble

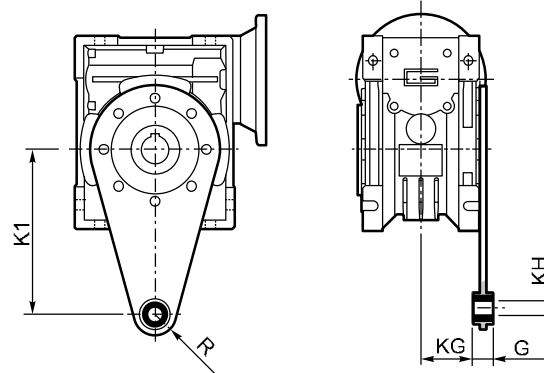


CM	d h7	B	B1	G1	L	L1	f	b1	t1
040	0.750	1.969	2.087	3.071	5.394	7.244	1/4"-20	0.188	0.830
050	1.000	1.969	2.106	3.622	6.004	7.835	3/8"-16	0.250	1.108
063	1.125	2.362	2.500	4.409	7.224	9.409	3/8"-16	0.250	1.230
075	1.250	2.756	2.894	4.724	7.933	10.512	1/2"-13	0.250	1.360
090	1.375	3.150	3.327	5.512	9.232	12.165	1/2"-13	0.312	1.509
110	1.625	3.543	3.720	6.102	10.217	13.543	5/8"-11	0.375	1.789

Torque arm

Brazo de reacción

CM	K1	G	KG	KH	R
040	3.937	0.551	1.220	0.394	0.709
050	3.937	0.551	1.496	0.394	0.709
063	5.906	0.551	1.870	0.394	0.709
075	7.874	0.984	1.831	0.787	1.181
090	7.874	0.984	2.224	0.787	1.181
110	9.843	1.181	2.441	0.984	1.378



Options

Opciones

SC - Safety cover

CM	M
040	2.146
050	2.461
063	2.874
075	3.110
090	3.701
110	4.016

